



Workshop Agreements

- One mic, one diva.
- Take space, make space.
- Be mindful of the entire group when asking questions.
- Do you have in-depth project-specific questions? Schedule a one-on-one session!



The Cultural Equity Endowment Fund is established to move San Francisco arts funding toward cultural equity.

The goal of cultural equity will be achieved when all the people that make up the City have **fair access to the information, financial resources and opportunities** vital to full cultural expression, and the opportunity to be **represented in the development of arts policy and the distribution of arts resources**; when all the cultures and subcultures of the City are expressed in **thriving, visible arts organizations of all sizes**; when new large-budget arts institutions flourish whose programming reflects the experiences of historically underserved communities, such as: **African American; Asian American; disabled; Latino; lesbian and gay; Native American; Pacific Islander**; and, **women**.

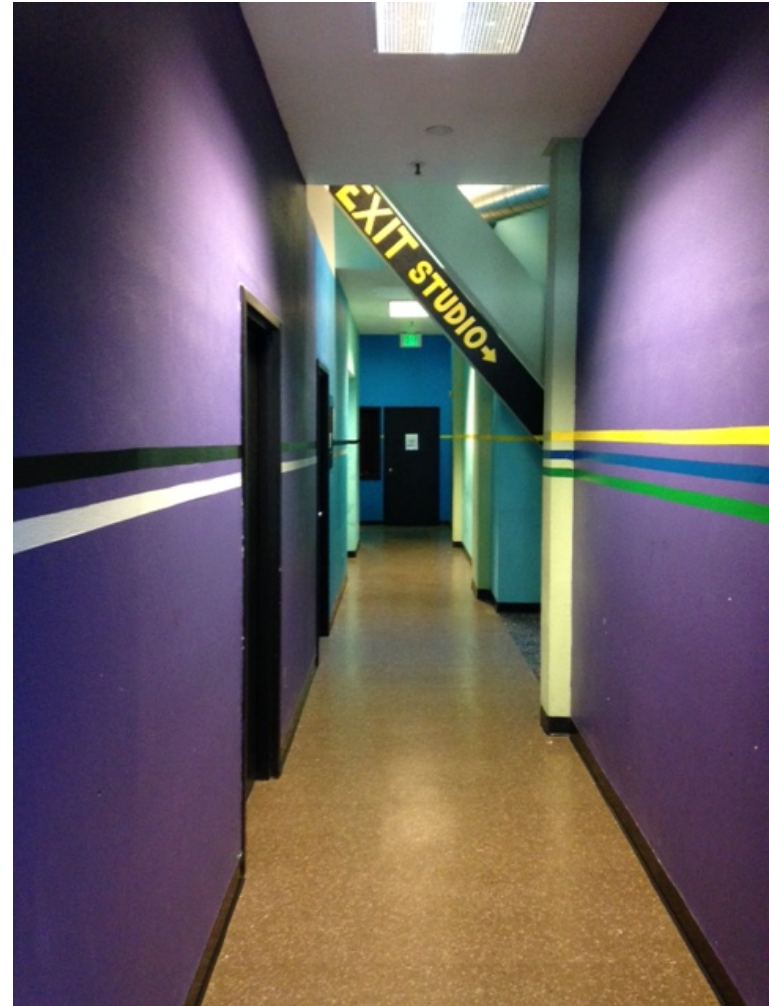


Organizations

- Artists and Communities in Partnership (ACIP)
- Arts for Neighborhood Vitality (ANV)
- Cultural Equity Initiatives (CEI)
- Organization Project Grants (OPG)
- Creative Space (CRSP)
- Artistic Legacy Grant (ALG)
- Special Grants (SPX)

Individual Artists

- Individual Artist Commissions (IAC)
- WritersCorps Teaching Artist in Residence (WCTAIR)



NAACT Grant Category

Native American Arts & Cultural Traditions (NAACT) category is aligned with all Cultural Equity Grants.

- Applicants are to **apply through the applicable grant category**, and will be prompted to choose if they would like to apply through NAACT.
- By choosing this prompt, these applications will be **reviewed by a panel of community members** that represent the Native American community in San Francisco Bay Area.
- Applicants to NAACT should **clearly substantiate that they are connected to the Native American community** within their narrative responses.

Panel Process

To ensure our process is rooted in cultural equity, applications are openly reviewed by a panel of peers. Our panelists:

- Meet in a publically accessible setting
- Review applications, discusses and scores applications
- Recommend funding allocations

Staff works hard to ensure that **panels are equitably representative of the applicant pool** and the larger city of San Francisco with regards to race/ethnicity, gender identity, sexuality, ability status, as well as artistic discipline and organizational expertise.



Creative Space Grant



Creative Space Grant

The category aims to improve existing arts facilities and develop new ones that will support the work of San Francisco's arts organizations and artists.

Facilities: Grants for up to \$100,000 to tax-exempt arts organizations with programming space for capital improvements to address emergency situations, improve the capacity of the creative space, and/or to have significant positive effect on audience accessibility, comfort, and enjoyment.

Planning: Grants for up to \$50,000 for planning for the development or acquisition of arts facilities.



CRSP Basic Eligibility

- Be **tax-exempt** or organization **based in SF**
- Established in S.F. for at least 2 years with regular programming as demonstrated through minimum of **at least 4 events in S.F. that span back to October 2015.**
- One year on/one year off
- The organization's three-year average annual **operating budget must not exceed \$2M** (determined by the line: Revenue Less In-Kind minus Non-operating Revenue in the SFAC Data Arts Report)
- In good standing with SFAC and our funding partners
- Grant window is **July 1, 2018 to June 30, 2019**



Facility Changes From Last Year

- **Artistic History** prioritizes communities including African, Latinx, Asian, Arab, Native American, Pacific Islander, LGBTQ, people with disabilities, and women
- **Scoring weighted** towards Project Feasibility and Organization Health



Scoring Criteria

**Alignment with
SFAC Goals**
(25 points)

**Quality of Proposed
Project**
(20 points, [L2-30](#))

Artistic History
(20 points, [L2-30](#))

**Project Feasibility
and Organization
Health**
(35 points, [L2-45](#))

Cultural Equity Outcomes

All organizations funded by the Cultural Equity Endowment Fund must align with one or more of SFAC's cultural equity outcomes:

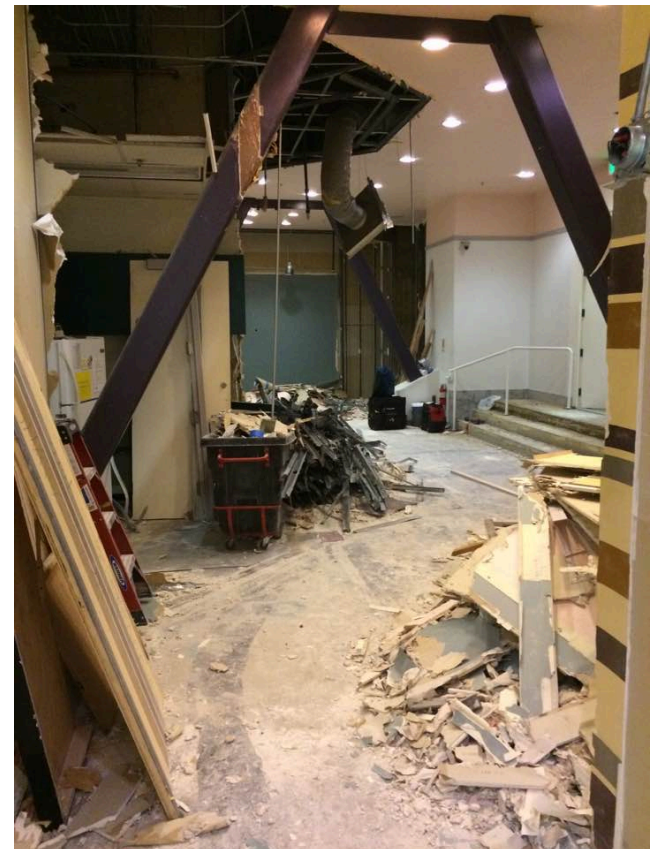
- **Build capacity**, resilience and economic viability of individual artists from historically marginalized communities.
- **Provide a space to access art** and creativity for historically marginalized communities.
- Create or present work that **demonstrates integrity** and ethical use of material with specific cultural origins and context.
- Address how race, gender, sexuality, ability, socioeconomic status, immigration status, religion, class, etc. are **interconnected through artistic programming** or process.



Artistic History (20 points)

Demonstrated commitment to the organization's mission through artistic programs. Impact on communities including African, Latinx, Asian, Arab, Native American, Pacific Islander, LGBTQ, people with disabilities, and women.

- Award and grants
- Press coverage
- Artists you've worked with
- [L2](#): how has your space served as an anchor institution to support the surrounding community



2016 CRSP of New Conservatory Theatre Center

Quality of Proposed Project CRSP Priorities: (15 points)

- Capital expenditures for **emergency situations** that render the artistic activities at a creative space inoperable such as to **correct cited fire, ADA and/or safety code violations** or to address issues prior to receiving a citation.
- Capital expenditures to improve the capacity of the creative space by significantly **improving an organization's artistic presentation** such as improved stage floor, lighting system, or new sound equipment.
- Capital expenditures which will have significant **positive effect on audience accessibility, comfort, and enjoyment** to creative space such as soundproofing, seating areas, or heating/cooling equipment.

Quality of Proposed Project Quality Care: (5 points)

- History of quality care of the facility, plan to adapt to the improvements, plan to maintain the improvements



Quality of Proposed Project Impact on Neighbors: (10 points)

- **L2:** Impact on the applicants neighbors, the local arts community, and the community at large



Project Feasibility Organizational Health (35)

Budget:

- What revenue streams are secured?
- Why are you confident in your numbers?
- **L2:** Scrutiny of project budget and financial support for the project

Project Team:

- Highlight the experience on your team.

Fiscal Health:

- DataArts funders report
- Are there red flags? Definitely explain with notes



How to Submit your Application

- Set up your [user name](#) and organization info
- All applicants must select [Distributor/Direct Receiver](#)
- Write in another document. Use a character counter. [Save often](#)
- Size matters (server only accepts 250mb so for videos and audio use vimeo/soundcloud/etc.)
- If you are applying to multiple grants, you can [access supporting materials](#) from other grants.
- SFAC and GFTA have [different DataArts funder reports](#). If you are applying to both agencies, please make sure you upload the correct funder report.
- Contact us if you need to [resubmit](#) before the deadline.



Key Pointers

- Read the guidelines
- Look at our website's FAQ section
- Review the scoring criteria
- Be consistent, be specific, instill confidence in the panelists
- Write with enthusiasm, but be realistic and use an economy of words

Deadline is **October 25 at noon**



Questions?

Program Officer:

Robynn Takayama, 415-252-2239

robynn.takayama@sfgov.org

Program Associate:

Claudia Leung, 415-252-2211

claudia.leung@sfgov.org

Make sure you sign up for our email list to learn about future grant opportunities.

